



YARD OF THE QUARTER



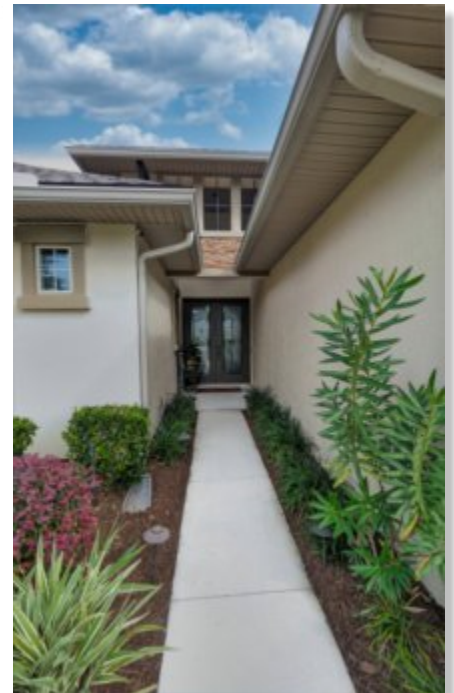
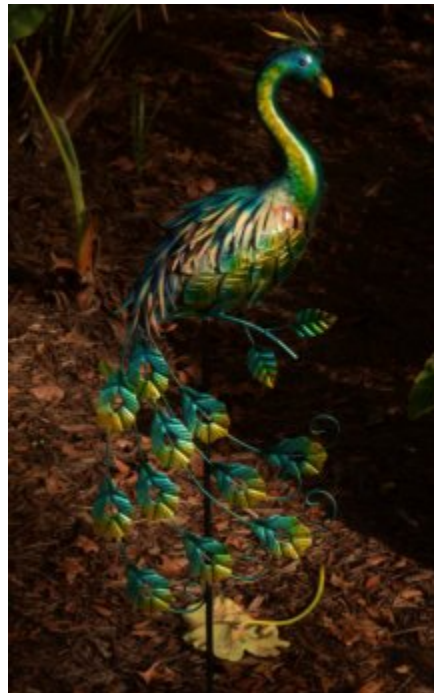
DIMPLE & PETER WISH

A Circle, a Drive, and a Boulevard.

There's one property unique in Magnolia Point in that it borders one of each: Belfry, Colonial, and Pebble Beach. It's 1692 Belfry Circle, though what Dimple and Peter Wish call their 'pork chop' neatly combines many familiar elements in an inviting and special habitat.

A neat ornamental aluminum fence marks off the just part of the backyard, the eastern side offering glimpses of the cart path of the Red Nine. Looking out from the back patio, over the baronial arc of a stone knee wall, the landscape blending into one restful setting, that fence subtly knitting the yard into the larger, albeit decamped Golf Club enterprise, cart path included, the whole effect warmly nostalgic just the same. The fence which in any other yard would mark the end, in theirs is really a beginning. And the yard beyond goes on. And on. And on.

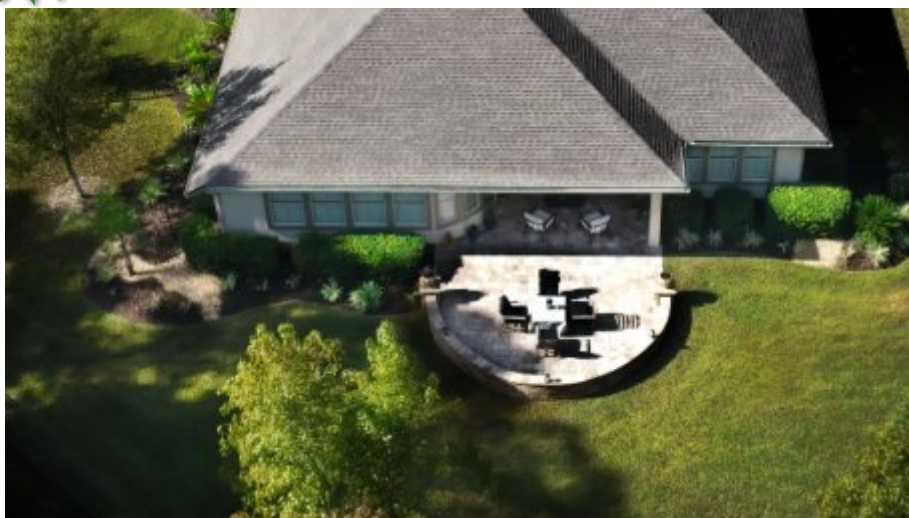
To Pebble Beach, Wish family solar landscape lights decorating the neat plantings all along the way. The expanse, seeming worthy of its own zip code, is St. Augustine front to back.



Continued



1ST YARD OF THE QUARTER



The Magnolia Point Community Association Landscape and Irrigation Committee would like to announce the Dimple and Peter Wish residence as our selection for the 4th Quarter 2023 Yard of the Quarter.

Dimple and Peter moved into their beautiful home in Magnolia Point from Lake Asbury in the Spring of 2020. They chose the house in part because it has a large yard with room for large flower beds.

The yard was a challenge to landscape because all sides are

open to the community and creating private spaces was important to them. They added a metal fence around the backyard to define the space and then added a ligustrum hedgerow along the side facing Colonial Drive for privacy. They created flower beds throughout the lawn areas and added landscape lighting as an accent. Peter is especially fond of the copper finish lighting.



When they moved in, they increased the size of the paver patio area and added a stone landscape wall around the outside of it. On a trip to Hawaii, they fell in love with tropical plants. That influence can be seen in the choice of Ti plants and crotons that they have added to their landscape design. Other tropical and tropical looking plants they have added include philodendrons, birds of paradise, and various palm and cycad specimens.

Other interesting plant selections include using Texas Sage as a hedgerow in front of the home. Texas Sage is a beautiful sun loving underused shrub native to Texas and New Mexico with soft, delicate-looking silver gray foliage and gorgeous purple/lavender trumpet shaped flowers during the summer. It grows well in our hardiness zone, is drought tolerant, grows slowly and requires little to no fertilizer once established. It likes soil that drains well and does not like “wet feet”. Because it only grows to about 6 feet, it is an excellent choice for container planting or as a low maintenance hedgerow as it is used here.

As they stated, their yard is an ever-evolving “work in progress”. We are looking forward to seeing how their landscape design progresses.

- CINDY FRANCISCO

